



DLD

CONTRACT

DOWNLIGHT PRICELIST

2021 | UK RRP | ex. VAT



TRUE COLOUR 800

WHAT MAKES OUR DOWNLIGHTS SPECIAL?

TRUE COLOUR CRI 98

INTRODUCING TRUE COLOUR CRI98

True Colour offers CRI 98 & R9 95 colour rendering - whites are whiter and reds have never been redder! Utilising the best colour rendering LED technology on the market, our range of cutting-edge downlights all use True Colour LED COBs - perfect for applications where perfectly accurate colour rendering is a must.



5 YEAR WARRANTY

All of our downlights are supplied with a 5 year warranty, offering full piece of mind.



DIM-TO-DARK

Flicker-free, dim all the way down to dark with our top-of-the-range dimmable drivers.



FIRE RATED

Our downlights are fire rated as standard, lasting over 60 minutes in independent tests by Cambridge Fire Research.



CASAMBI BLUETOOTH COMPATIBLE

Scene control post installation, our downlights are all compatible with Casambi dimming units. Create the perfect mood for all situations wirelessly via Bluetooth 4.0 and save them as pre-set scenes on the Casambi smartphone app. Or control the scene at the touch of a button, either with Casambi wireless wall switches or with an off-the-shelf push dimmable on/off switch.

Get in touch for more info.

DLD CONTRACT DOWNLIGHT PRICELIST

2021 | UK RRP | ex. VAT



ANDES SINGLE DOWNLIGHT

DETAILS

Type	Fixed or Adjustable (24°)
IP Rating	IP65 (fixed) or IP54 (adjust.)
IP Zone	Fixed - Zone 1, Adjust. - Zone 2
Wattage	13W
Current	350mA
Fire Rated	60+ minutes
Material	Aluminium
Cable	2 Core 0.5mm ²
Cable Length	300mm
Warranty	5 Years

RRP ex. VAT

Fitting and plaster kit/trim only	£78.75
-----------------------------------	---------------

Fitting, plaster kit/trim with the following driver:

Osram mains dimmable	£86.63
Osram DALI dimmable	£92.75
EldoLED 0-10V dimmable	£97.13

PLASTER IN TRIMLESS

ANDES 1-R LED ADJUSTABLE



Ø70mm, H.105mm
Cutout: Ø78mm

ANDES 1-S LED ADJUSTABLE



72 x 72mm, H.105mm
Cutout: 80 x 80mm

ANDES 1-R LED FIXED



Ø70mm, H.105mm
Cutout: Ø78mm

ANDES 1-S LED FIXED



72 x 72mm, H.105mm
Cutout: 80 x 80mm

RECESSED WITH TRIM

ANDES 1-R LED ADJUSTABLE



Ø92mm, H.105mm
Cutout: Ø78mm

ANDES 1-S LED ADJUSTABLE



90 x 90mm, H.105mm
Cutout: 80 x 80mm

ANDES 1-R LED FIXED



Ø92mm, H.105mm
Cutout: Ø78mm

ANDES 1-S LED FIXED



90 x 90mm, H.105mm
Cutout: 80 x 80mm

PRODUCT CODE

MODEL	SHAPE	TYPE	ADJUSTABLE	FINISH	BAFFLE	BEAM ANGLE	COLOUR TEMP.	DRIVER
ANDES1	R - round S - square	P - plaster in R - recessed with trim	A - adjustable F - fixed	W - white B - black	W - white B - black	15D - 15° 24D - 24° 36D - 36°	27K - 2700K 30K - 3000K 40K - 4000K	- none MD - mains 010 - 0/10V D - DALI

e.g. **ANDES1-R-P-A-W-B-15D-27K** = Andes 1-R round plaster-in adjustable downlight, white with black baffle, 15 degree beam angle, 2700K colour temperature with no driver

DLD CONTRACT DOWNLIGHT PRICELIST

2021 | UK RRP | ex. VAT



ANDES 2 TWIN DOWNLIGHT

DETAILS

Type	Fixed or Adjustable (24°)
IP Rating	IP65 (fixed) or IP54 (adjust.)
IP Zone	Fixed - Zone 1, Adjust. - Zone 2
Wattage	2 x 13W
Current	350mA
Fire Rated	60+ minutes
Material	Aluminium
Cable	2 Core 0.5mm ²
Cable Length	300mm
Warranty	5 Years

RRP ex. VAT

Fitting and plaster kit/trim only	£157.50
-----------------------------------	----------------

Fitting, plaster kit/trim with the following 2 drivers:

Osram mains dimmable	£173.26
Osram DALI dimmable	£185.50
EldoLED 0-10V dimmable	£194.26

PLASTER IN TRIMLESS

ANDES 2 LED ADJUSTABLE



164 x 76mm, H.105mm
Cutout: 168 x 80mm

ANDES 2 LED FIXED



164 x 76mm, H.105mm
Cutout: 168 x 80mm

RECESSED WITH TRIM

ANDES 2 LED ADJUSTABLE



180 x 90mm, H.105mm
Cutout: 165 x 80mm

ANDES 2 LED FIXED



180 x 90mm, H.105mm
Cutout: 165 x 80mm

PRODUCT CODE

MODEL	SHAPE	TYPE	ADJUSTABLE	FINISH	BAFFLE	BEAM ANGLE	COLOUR TEMP.	DRIVER
ANDES2		P - plaster in R - recessed with trim	A - adjustable F - fixed	W - white B - black	W - white B - black	15D - 15° 24D - 24° 36D - 36°	27K - 2700K 30K - 3000K 40K - 4000K	- none MD - mains 010 - 0/10V D - DALI

e.g. **ANDES2-R-F-W-B-24D-30K-010** = Andes 2 recessed with trim fixed downlight, white with black baffle, 24 degree beam angle, 3000K colour temperature with 0/10V dimmable driver

DLD CONTRACT DOWNLIGHT PRICELIST

2021 | UK RRP | ex. VAT



ANDES MINI SINGLE DOWNLIGHT

DETAILS

Type	Fixed or Adjustable (24°)
IP Rating	IP65 (fixed) or IP54 (adjust.)
IP Zone	Fixed - Zone 1, Adjust. - Zone 2
Wattage	7W
Current	180mA
Fire Rated	60+ minutes
Material	Aluminium
Cable	2 Core 0.5mm ²
Cable Length	300mm
Warranty	5 Years

RRP ex. VAT

Fitting and plaster kit/trim only	£64.64
-----------------------------------	---------------

Fitting, plaster kit/trim with the following driver:

Osram mains dimmable	£72.51
Osram DALI dimmable	£76.01
EldoLED 0-10V dimmable	£76.01

PLASTER IN TRIMLESS

ANDES MINI 1-R LED ADJUSTABLE



Ø63mm, H.89mm
Cutout: Ø70mm

ANDES MINI 1-S LED ADJUSTABLE



63 x 63mm, H.89mm
Cutout: 70 x 70mm

ANDES MINI 1-R LED FIXED



Ø63mm, H.89mm
Cutout: Ø70mm

ANDES MINI 1-S LED FIXED



63 x 63mm, H.89mm
Cutout: 70 x 70mm

RECESSED WITH TRIM

ANDES MINI 1-R LED ADJUSTABLE



Ø78mm, H.87mm
Cutout: Ø70mm

ANDES MINI 1-S LED ADJUSTABLE



78 x 78mm, H.87mm
Cutout: 70 x 70mm

ANDES MINI 1-R LED FIXED



Ø78mm, H.87mm
Cutout: Ø70mm

ANDES MINI 1-S LED FIXED



78 x 78mm, H.87mm
Cutout: 70 x 70mm

PRODUCT CODE

MODEL	SHAPE	TYPE	ADJUSTABLE	FINISH	BAFFLE	BEAM ANGLE	COLOUR TEMP.	DRIVER
ANDES MINI1	R - round S - square	P - plaster in R - recessed with trim	A - adjustable F - fixed	W - white B - black	W - white B - black	15D - 15° 24D - 24° 36D - 36°	27K - 2700K 30K - 3000K 40K - 4000K	- none MD - mains 010 - 0/10V D - DALI

e.g. **ANDESMINI1-R-P-A-W-B-15D-27K-MD** = Andes Mini 1-R round plaster-in adjustable downlight, white with black baffle, 15 degree beam angle, 2700K colour temperature with mains dimmable driver

DLD CONTRACT DOWNLIGHT PRICELIST

2021 | UK RRP | ex. VAT

DLD
CONTRACT

ATLAS SINGLE DOWNLIGHT

DETAILS

Type	Fixed or Adjustable (20°)
IP Rating	IP44 (fixed & adjust.)
IP Zone	Zone 2
Wattage	12.9W
Current	450mA
Fire Rated	60+ minutes
Material	Aluminium
Cable	2 Core 0.5mm ²
Cable Length	300mm
Warranty	5 Years

RRP ex. VAT

Fitting and plaster kit/trim only	£75.24
-----------------------------------	--------

Fitting, plaster kit/trim with the following driver:

Osram mains dimmable	£83.12
Osram DALI dimmable	£89.25
EldoLED 0-10V dimmable	£93.62

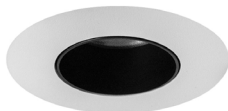
PLASTER IN TRIMLESS

ATLAS ADJUSTABLE



Ø80mm, H.83mm
Cutout: Ø85mm

ATLAS FIXED



Ø80mm, H.83mm
Cutout: Ø85mm

RECESSED WITH TRIM

ATLAS ADJUSTABLE



Ø76mm, H.87mm
Cutout: Ø68mm

ATLAS FIXED



Ø76mm, H.83mm
Cutout: Ø68mm

PRODUCT CODE

MODEL	SHAPE	TYPE	ADJUSTABLE	FINISH	BAFFLE	BEAM ANGLE	COLOUR TEMP.	DRIVER
ATL		P - plaster in R - recessed with trim	A - adjustable F - fixed	W - white B - black	W - white B - black	15D - 15° 25D - 25° 38D - 38° 60D - 60°	27K - 2700K 30K - 3000K 40K - 4000K	- none MD - mains 010 - 0/10V D - DALI

e.g. **ATL-P-F-W-B-15D-27K-MD** = Atlas plaster-in fixed downlight, white with black baffle,
15 degree beam angle, 2700K colour temperature with mains dimmable driver

DLD CONTRACT DOWNLIGHT PRICELIST

2021 | UK RRP | ex. VAT

DLD
CONTRACT

ATLAS MINI SINGLE DOWNLIGHT

DETAILS

Type	Fixed or Adjustable (25°)
IP Rating	IP65 (front only) IP20 (heat sink)
IP Zone	Zone 1 & 2
Wattage	6.4W
Current	350mA
Fire Rated	60+ minutes
Material	Aluminium
Cable	2 Core 0.5mm ²
Cable Length	300mm
Warranty	5 Years

RRP ex. VAT

Fitting and plaster kit/trim only	£65.63
-----------------------------------	---------------

Fitting, plaster kit/trim with the following driver:

Osram mains dimmable	£73.50
Osram DALI dimmable	£77.00
EldoLED 0-10V dimmable	£77.00

PLASTER IN TRIMLESS

ATLAS MINI ADJUSTABLE



Ø59mm, H.64mm
Cutout: Ø64mm

ATLAS MINI FIXED



Ø59mm, H.64mm
Cutout: Ø64mm

RECESSED WITH TRIM

ATLAS MINI ADJUSTABLE



Ø55mm, H.64mm
Cutout: Ø48mm

ATLAS MINI FIXED



Ø55mm, H.64mm
Cutout: Ø48mm

PRODUCT CODE

MODEL	SHAPE	TYPE	ADJUSTABLE	FINISH	BAFFLE	BEAM ANGLE	COLOUR TEMP.	DRIVER
ATLMINI		P - plaster in R - recessed with trim	A - adjustable F - fixed	W - white B - black	W - white B - black	50D - 50°	27K - 2700K 30K - 3000K 40K - 4000K	- none MD - mains 010 - 0/10V D - DALI

e.g. **ATLMINI-R-A-W-B-50D-27K-D** = Atlas recessed with trim adjustable downlight, white with black baffle, 15 degree beam angle, 2700K colour temperature with DALI dimmable driver

DLD CONTRACT DOWNLIGHT PRICELIST

2021 | UK RRP | ex. VAT



EIGER SINGLE DOWNLIGHT

DETAILS

Type	Fixed or Adjustable (24°)
IP Rating	IP65 (fixed) or IP54 (adjust.)
IP Zone	Fixed - Zone 1, Adjust. - Zone 2
Wattage	13W
Current	350mA
Fire Rated	60+ minutes
Material	Aluminium
Cable	2 Core 0.5mm ²
Cable Length	300mm
Warranty	5 Years

RRP ex. VAT

Fitting and plaster kit/trim only	£75.24
-----------------------------------	---------------

Fitting, plaster kit/trim with the following driver:

Osram mains dimmable	£83.12
Osram DALI dimmable	£89.25
EldoLED 0-10V dimmable	£93.65

PLASTER IN TRIMLESS

EIGER 1-R LED ADJUSTABLE



Ø70mm, H.101mm
Cutout: Ø78mm

EIGER 1-S LED ADJUSTABLE



72 x 72mm, H.101mm
Cutout: 80 x 80mm

EIGER 1-R LED FIXED



Ø70mm, H.101mm
Cutout: Ø78mm

EIGER 1-S LED FIXED



72 x 72mm, H.101mm
Cutout: 80 x 80mm

RECESSED WITH TRIM

EIGER 1-R LED ADJUSTABLE



Ø92mm, H.105mm
Cutout: Ø78mm

EIGER 1-S LED ADJUSTABLE



90 x 90mm, H.105mm
Cutout: 80 x 80mm

EIGER 1-R LED FIXED



Ø92mm, H.105mm
Cutout: Ø78mm

EIGER 1-S LED FIXED



90 x 90mm, H.105mm
Cutout: 80 x 80mm

PRODUCT CODE

MODEL	SHAPE	TYPE	ADJUSTABLE	FINISH	BAFFLE	BEAM ANGLE	COLOUR TEMP.	DRIVER
EIG1	R - round S - square	P - plaster in R - recessed with trim	A - adjustable F - fixed	W - white B - black		15D - 15° 24D - 24° 36D - 36°	27K - 2700K 30K - 3000K 40K - 4000K	- none MD - mains 010 - 0/10V D - DALI

e.g. **EIG1-R-P-A-W-15D-27K-MD** = Eiger 1-R round plaster-in adjustable downlight in white, 15 degree beam angle, 2700K colour temperature with mains dimmable driver

DLD CONTRACT DOWNLIGHT PRICELIST

2021 | UK RRP | ex. VAT



EIGER 2 TWIN DOWNLIGHT

DETAILS

Type	Fixed or Adjustable (24°)
IP Rating	IP65 (fixed) or IP54 (adjust.)
IP Zone	Fixed - Zone 1, Adjust. - Zone 2
Wattage	2 x 13W
Current	350mA
Fire Rated	60+ minutes
Material	Aluminium
Cable	2 Core 0.5mm ²
Cable Length	300mm
Warranty	5 Years

RRP ex. VAT

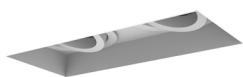
Fitting and plaster kit/trim only	£150.48
-----------------------------------	----------------

Fitting, plaster kit/trim with the following 2 drivers:

Osram mains dimmable	£166.24
Osram DALI dimmable	£178.50
EldoLED 0-10V dimmable	£187.30

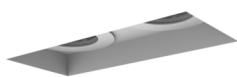
PLASTER IN TRIMLESS

EIGER 2 LED ADJUSTABLE



164 x 76mm, H.101mm
Cutout: 168 x 80mm

EIGER 2 LED FIXED



164 x 76mm, H.101mm
Cutout: 168 x 80mm

RECESSED WITH TRIM

EIGER 2 LED ADJUSTABLE



180 x 90mm, H.105mm
Cutout: 165 x 80mm

EIGER 2 LED FIXED



180 x 90mm, H.105mm
Cutout: 165 x 80mm

PRODUCT CODE

MODEL	SHAPE	TYPE	ADJUSTABLE	FINISH	BAFFLE	BEAM ANGLE	COLOUR TEMP.	DRIVER
EIG2		P - plaster in	A - adjustable	W - white		15D - 15°	27K - 2700K	- none
		R - recessed	F - fixed	B - black		24D - 24°	30K - 3000K	MD - mains
		with trim				36D - 36°	40K - 4000K	010 - 0/10V
								D - DALI

e.g. **EIG2-R-F-W-15D-27K** = Eiger 2 recessed with trim fixed downlight in white, 15 degree beam angle, 2700K colour temperature with no driver

DLD CONTRACT DOWNLIGHT PRICELIST

2021 | UK RRP | ex. VAT



EIGER 3 TRIPLE DOWNLIGHT

DETAILS

Type	Fixed or Adjustable (24°)
IP Rating	IP65 (fixed) or IP54 (adjust.)
IP Zone	Fixed - Zone 1, Adjust. - Zone 2
Wattage	3 x 13W
Current	350mA
Fire Rated	60+ minutes
Material	Aluminium
Cable	2 Core 0.5mm ²
Cable Length	300mm
Warranty	5 Years

RRP ex. VAT

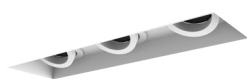
Fitting and plaster kit/trim only	£225.72
-----------------------------------	----------------

Fitting, plaster kit/trim with the following 3 drivers:

Osram mains dimmable	£249.36
Osram DALI dimmable	£267.75
EldoLED 0-10V dimmable	£280.95

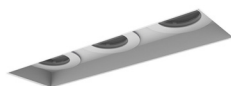
PLASTER IN TRIMLESS

EIGER 3 LED ADJUSTABLE



248 x 74mm, H.101mm
Cutout: 255 x 80mm

EIGER 3 LED FIXED



248 x 74mm, H.101mm
Cutout: 255 x 80mm

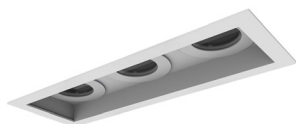
RECESSED WITH TRIM

EIGER 3 LED ADJUSTABLE



266 x 90mm, H.105mm
Cutout: 255 x 80mm

EIGER 3 LED FIXED



266 x 90mm, H.105mm
Cutout: 255 x 80mm

PRODUCT CODE

MODEL	SHAPE	TYPE	ADJUSTABLE	FINISH	BAFFLE	BEAM ANGLE	COLOUR TEMP.	DRIVER
EIG3		P - plaster in	A - adjustable	W - white		15D - 15°	27K - 2700K	- none
		R - recessed	F - fixed	B - black		24D - 24°	30K - 3000K	MD - mains
		with trim				36D - 36°	40K - 4000K	010 - 0/10V
								D - DALI

e.g. **EIG3-P-A-W-15D-27K-010** = Eiger 3 plaster-in adjustable downlight in white, 15 degree beam angle, 2700K colour temperature with 0/10V dimmable driver

DLD CONTRACT DOWNLIGHT PRICELIST

2021 | UK RRP | ex. VAT



EIGER MINI SINGLE DOWNLIGHT

DETAILS

Type	Fixed or Adjustable (24°)
IP Rating	IP65 (fixed) or IP54 (adjust.)
IP Zone	Fixed - Zone 1, Adjust. - Zone 2
Wattage	7.7W
Current	180mA
Fire Rated	60+ minutes
Material	Aluminium
Cable	2 Core 0.5mm ²
Cable Length	300mm
Warranty	5 Years

RRP ex. VAT

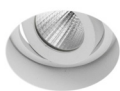
Fitting and plaster kit/trim only	£61.24
-----------------------------------	---------------

Fitting, plaster kit/trim with the following driver:

Osram mains dimmable	£69.12
Osram DALI dimmable	£72.62
EldoLED 0-10V dimmable	£72.63

PLASTER IN TRIMLESS

EIGER MINI 1-R LED ADJUSTABLE



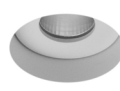
Ø63mm, H.87mm
Cutout: Ø68mm

EIGER MINI 1-S LED ADJUSTABLE



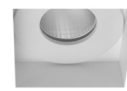
63 x 63mm, H.87mm
Cutout: 66 x 66mm

EIGER MINI 1-R LED FIXED



Ø63mm, H.87mm
Cutout: Ø68mm

EIGER MINI 1-S LED FIXED



63 x 63mm, H.87mm
Cutout: 66 x 66mm

RECESSED WITH TRIM

EIGER MINI 1-R LED ADJUSTABLE



Ø??mm, H.??mm
Cutout: Ø??mm

EIGER MINI 1-S LED ADJUSTABLE



Ø??mm, H.??mm
Cutout: Ø??mm

EIGER MINI 1-R LED FIXED



Ø??mm, H.??mm
Cutout: Ø??mm

EIGER MINI 1-S LED FIXED



Ø??mm, H.??mm
Cutout: Ø??mm

PRODUCT CODE

MODEL	SHAPE	TYPE	ADJUSTABLE	FINISH	BAFFLE	BEAM ANGLE	COLOUR TEMP.	DRIVER
EIG	R - round	P - plaster in	A - adjustable	W - white		15D - 15°	27K - 2700K	- none
MINI1	S - square	R - recessed with trim	F - fixed	B - black		24D - 24°	30K - 3000K	MD - mains
						36D - 36°	40K - 4000K	010 - 0/10V
								D - DALI

e.g. **EIGMINI1-P-F-W-15D-27K-MD** = Eiger Mini 1-R round plaster-in fixed downlight in white, 15 degree beam angle, 2700K colour temperature with mains dimmable driver

DLD CONTRACT DOWNLIGHT PRICELIST

2021 | UK RRP | ex. VAT

DLD
CONTRACT

EIGER MINI 2 TWIN DOWNLIGHT

DETAILS

Type	Fixed or Adjustable (24°)
IP Rating	IP65 (fixed) or IP54 (adjust.)
IP Zone	Fixed - Zone 1, Adjust. - Zone 2
Wattage	2 x 7.7W
Current	180mA
Fire Rated	60+ minutes
Material	Aluminium
Cable	2 Core 0.5mm ²
Cable Length	300mm
Warranty	5 Years

RRP ex. VAT

Fitting and plaster kit/trim only	£122.48
-----------------------------------	----------------

Fitting, plaster kit/trim with the following 2 drivers:

Osram mains dimmable	£138.24
Osram DALI dimmable	£145.24
EldoLED 0-10V dimmable	£145.24

PLASTER IN TRIMLESS

EIGER MINI 2 LED ADJUSTABLE



136 x 63mm, H.87mm
Cutout: 140 x 68mm

EIGER MINI 2 LED ADJUSTABLE



136 x 63mm, H.87mm
Cutout: 140 x 68mm

RECESSED WITH TRIM

EIGER MINI 2 LED ADJUSTABLE



151 x 78mm, H.87mm
Cutout: 140 x 68mm

EIGER MINI 2 LED ADJUSTABLE



151 x 78mm, H.87mm
Cutout: 140 x 68mm

PRODUCT CODE

MODEL	SHAPE	TYPE	ADJUSTABLE	FINISH	BAFFLE	BEAM ANGLE	COLOUR TEMP.	DRIVER
EIG		P - plaster in	A - adjustable	W - white		15D - 15°	27K - 2700K	- none
MINI2		R - recessed with trim	F - fixed	B - black		24D - 24° 36D - 36°	30K - 3000K 40K - 4000K	MD - mains 010 - 0/10V D - DALI

e.g. **EIGMINI2-P-A-W-15D-27K-010** = Eiger 2 plaster-in adjustable downlight in white, 15 degree beam angle, 2700K colour temperature with 0/10V dimmable driver

DLD CONTRACT DOWNLIGHT PRICELIST

2021 | UK RRP | ex. VAT



K2 DOWNLIGHT

DETAILS

Type	Fixed or Adjustable (22°)
IP Rating	IP65 (fixed) or IP44 (adjust.)
IP Zone	Fixed - Zone 1, Adjust. - Zone 2
Wattage	13W
Current	350mA
Fire Rated	60+ minutes
Material	Aluminium
Cable	2 Core 0.5mm ²
Cable Length	300mm
Warranty	5 Years

RRP ex. VAT

Fitting and plaster kit/trim only	£75.24
-----------------------------------	---------------

Fitting, plaster kit/trim with the following driver:

Osram mains dimmable	£83.12
Osram DALI dimmable	£89.25
EldoLED 0-10V dimmable	£93.62

PLASTER IN TRIMLESS

K2 LED ADJUSTABLE



Ø70mm, H.97mm
Cutout: Ø76mm

K2 LED FIXED



Ø70mm, H.97mm
Cutout: Ø76mm

PRODUCT CODE

MODEL	SHAPE	TYPE	ADJUSTABLE	FINISH	BAFFLE	BEAM ANGLE	COLOUR TEMP.	DRIVER
K2		P - plaster in	A - adjustable F - fixed	W - white B - black		13D - 13° 40D - 40°	27K - 2700K 30K - 3000K 40K - 4000K	- none MD - mains 010 - 0/10V D - DALI

e.g. **K2-P-F-W-13D-27K-D** = K2 plaster-in fixed downlight in white, 13 degree beam angle, 2700K colour temperature with DALI dimmable driver

TERMS AND CONDITIONS

Prices

Goods are charged at prices shown on the date the customer places the order and are excluding VAT, prices are correct at publication, errors and omissions are excepted. Orders will be accepted at our published prices, otherwise, in the case of any unexpected change in price, you will be informed and asked if you wish to reconsider your order before proceeding.

Price Pledge

We realize that price is important and we want you to be assured our prices are based on the recommended retail price. However, we are aware that some companies sell items for less. For this reason we offer our DLD Contract price pledge, so if you see the same product on a different U.K website please let us know and we will match it, we will need a written quotation from the retailer to do this.

If you have found one of our products elsewhere at a lower price or you have any queries regarding the DLD Contract price match then please get in touch on 01189 889414 (International 00 44 1189 882294) or mail us on enquiries@dld-contract.co.uk.

Shipping, Delivery and Postage and Packing

All relevant postage and packing, shipping or delivery charges are included for all orders over £300 for orders less than this we will charge £15. The goods you order will be delivered to the address you give when you place your order. We aim to dispatch all orders within 7 days of the item being in stock but please allow up to 14 days. During busy times, or for bespoke orders, this timeframe may increase. A working day is any day other than weekends, bank or public holidays. If delivery cannot be made to your address for reasons under DLD Contract's control, we will inform you as soon as possible.

If you fail to take delivery because you have cancelled your contract under the Distance Selling Regulation, DLD Contract shall refund or re-credit you within 30 days for any sum that has been paid by you or debited from your credit card for the order, less any expenses incurred for failed delivery.

Loss or Damaged Deliveries

Goods should be checked on receipt or be signed for as 'unexamined' and if cartons or external packaging shows signs of damage, they should be signed for as 'received damaged'. Claims for shortages or damaged in transit should be notified in writing to the carrier and ourselves within two days of receipt and in the case of non-delivery, within ten days of the date of invoice. Regrettably, claims not signed for as 'received damaged' or not notified to us within this period CANNOT BE ACCEPTED as we are unable to claim from the carrier.

Your Right of Cancellation (Distance Selling Regulations)

You have the right to cancel the contract at any time up to the end of 14 working days after you receive your order (see below). To exercise your right of cancellation, you must give written notice to Dark Light Design, com by letter, fax or email, giving details of the items ordered and (where appropriate) their delivery. Notification by phone is not sufficient.

If you exercise your right of cancellation after the items have been delivered to you, you will be responsible for returning them to DLD Contract at your own cost. The items must be returned to Unit 9 Brookside business Center, Church Road, Swallowfield, Reading, Berkshire, RG7 1TH.

You must take reasonable care to ensure the items are not damaged in the meantime or in transit. Once you have notified dld-contract.co.uk that you are cancelling the contract, we will refund or re-credit you within 30 days for any sum that has been paid by you or debited from your credit card for the items. If you do not return the goods as required, DLD Contract may charge you a sum not exceeding the direct costs of recovering the items.

TERMS AND CONDITIONS

Guarantee & Warranty

The company's products are manufactured in accordance with the latest international standards. Components which develop faults, not caused by clients negligence, within the 5 year warranty period will be repaired or replaced at our discretion. Any replacement parts supplied may be chargeable and invoiced at full value pending return of faulty parts for testing. Faulty parts returned within 30 days of receipt of replacements may be credited in full dependent upon result of testing. Under no circumstances can the company accept liability for labour charges, out of pocket expenses or damage incurred by defects however caused.

Value Added Tax (VAT)

All prices in this pricelist exclude a UK sales tax of 20% for VAT, this applies to UK customers only. Due to the UK leaving the European Union (EU), customers within the EU will now be treated the same as those that live outside the EU - UK VAT will not be charged on your order. Please note that import duties will need to be paid in accordance with local customs controls, and will need to be arranged by the customer.

Returns Policy

We hope that you will be happy with your purchases. Should you wish to return anything to us, our returns policy is set out below. If we make a mistake with your order, or if the goods received are in some way faulty, we have a no quibble returns policy. Simply return the item and we will replace it with the correct one. We will pay your return delivery costs. Returns should be made within a reasonable time (usually 28 days) and in original, undamaged packaging. If you change your mind for any other reason, we are happy to exchange items, provided the goods are returned to us within 14 working days of their receipt, in the original packaging and in a saleable condition.

Distance Selling Regulations

The customer is entitled to a full refund if they change their mind and cancel the order within 14 working days from the delivery date. It may take up to 28 days for this refund to be processed.

Disclaimer

All our products should be fitted by a fully qualified and competent electrician. We will not be liable for any faults that are caused by incorrect installation.



01189 889414



enquiries@dld-contract.co.uk



dld-contract.co.uk

DLD Contract Ltd
Unit 9 Brookside Business Centre
Church Road
Swallowfield
Reading
Berkshire
RG7 1TH