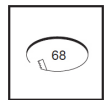
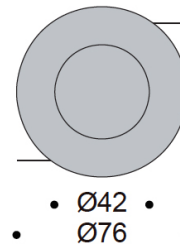
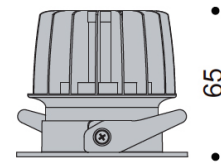


ATLAS

LED IP44 RECESSED DOWNLIGHT
DLD/0418161

DLD

CONTRACT



Dimensions

Ø76mm, H.65mm

Cutout

Ø68mm



- Removable light engine - simple twist mechanism
- IP44 - suitable for bathroom installation
- Complete with phase dimming driver
- Die-cast aluminium luminaire
- Forged aluminium heat sink
- Plastic PC reflector
- Bezel finish: white
- Optional honeycomb louvre, diffusion sheet or striped glass

ATLAS

LED IP44 RECESSED DOWNLIGHT
DLD/0418161



TECHNICAL OVERVIEW

Power	Current	Voltage	LED	IP Rating	Nominal Flux	CCT	Beam Angle	CRI	Dimming
12.9W	350mA	36.7V	CITIZEN COB	IP44	- 1329 lm	2700°K 3000°K	15/25/38/60°	90+	Yes

LENS



Diffusion Sheet STD

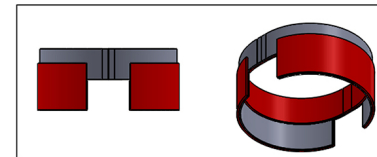
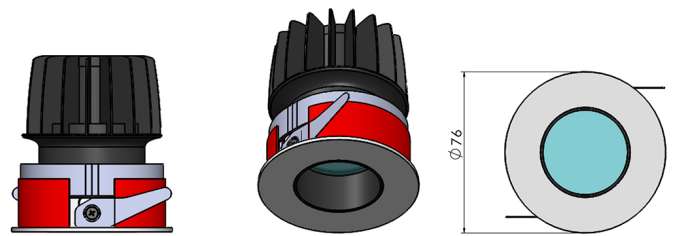


Honeycomb Louvre HL



Striped Glass SG

FIRE RATED CANISTER



Fire rated canister (optional)



Version with baffle



Flush version without baffle

ATLAS

LED IP44 RECESSED DOWNLIGHT
DLD/0418161



PRODUCT CODE CONSTRUCTION

ATLAS LED IP44 RECESSED DOWNLIGHT

DLD/0418161 / [X] / [X] / [X] / [X] / [X] / [X]

FIRE RATED:

[--] [FRC]

None Fire rated canister

LENS:

[STD] [HL] [SG]

Standard diffusion sheet Honeycomb louvre Striped glass

LIGHT COLOUR TEMPERATURE (CCT):

[27K] [30K]

2700°K 3000°K

BEAM ANGLE:

[15D] [24D] [38D] [60D]

15° 24° 38° 60°

WATTAGE:

[13W]

12.9W

BEZEL FINISH:

[WH]

White

 01189 889414

 enquiries@dld-contract.co.uk

 dld-contract.co.uk

DLD Contract Ltd
Unit 9 Brookside Business Centre
Church Road
Swallowfield
Reading
Berkshire
RG7 1TH